

# \$119,000 - 24, 165111 Township Road 532a Subdivision, Rural Yellowhead County

---

MLS® #A1128558

**\$119,000**

0 Bedroom, 0.00 Bathroom,  
Land on 2.89 Acres

NONE, Rural Yellowhead County, Alberta

Gated Community. Private subdivision located about 2 miles east of Edson. Property includes underground services to property line which consists of power, gas, telephone and high speed internet. Property owners are responsible for septic and well.

## Essential Information

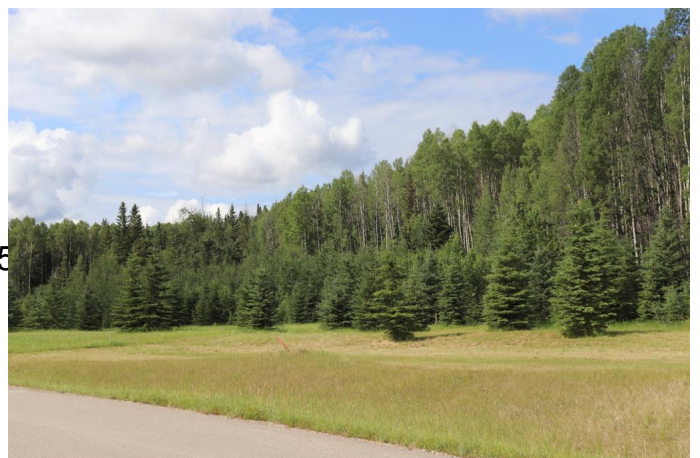
MLS® #	A1128558
Price	\$119,000
Bathrooms	0.00
Acres	2.89
Type	Land
Sub-Type	Residential Land
Status	Active

## Community Information

Address	24, 165111 Township Road 5
Subdivision	NONE
City	Rural Yellowhead County
County	Yellowhead County
Province	Alberta
Postal Code	T7E 3A6

## Additional Information

Date Listed	July 9th, 2021
Days on Market	1357
Zoning	CR



## Listing Details

Listing Office            RE/MAX BOXSHAW FOUR REALTY

Data is supplied by Pillar 9â,,ç MLSÂ® System. Pillar 9â,,ç is the owner of the copyright in its MLSÂ® System. Data is deemed reliable but is not guaranteed accurate by Pillar 9â,,ç. The trademarks MLSÂ®, Multiple Listing ServiceÂ® and the associated logos are owned by The Canadian Real Estate Association (CREA) and identify the quality of services provided by real estate professionals who are members of CREA. Used under license.