

\$70,000 - 9125 134 Avenue, Peace River

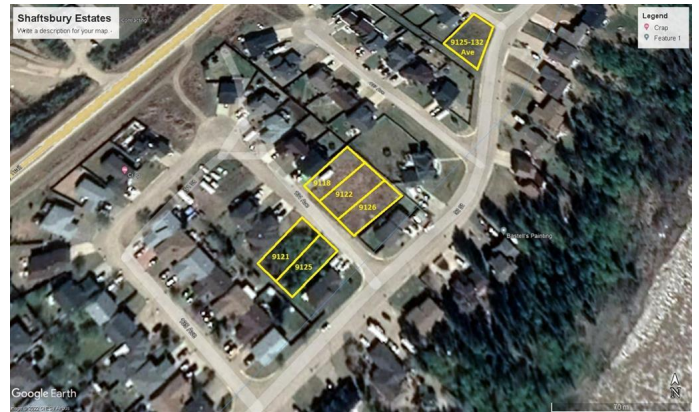
MLS® #A1231685

\$70,000

0 Bedroom, 0.00 Bathroom,
Land on 0.13 Acres

Shaftesbury Estates, Peace River, Alberta

Large lot in Shaftesbury Estates waiting for its next new owner to develop. Shaftesbury Estates is a great place to raise your family with playgrounds and walking trails nearby. If you are looking to build, the owner has many lots and options available. Call for details.



Essential Information

| | |
|-----------|------------------|
| MLS® # | A1231685 |
| Price | \$70,000 |
| Bathrooms | 0.00 |
| Acres | 0.13 |
| Type | Land |
| Sub-Type | Residential Land |
| Status | Active |

Community Information

| | |
|-------------|------------------------|
| Address | 9125 134 Avenue |
| Subdivision | Shaftesbury Estates |
| City | Peace River |
| County | Peace No. 135, M.D. of |
| Province | Alberta |
| Postal Code | T8S 1X1 |

Additional Information

| | |
|----------------|-----------------|
| Date Listed | June 20th, 2022 |
| Days on Market | 998 |
| Zoning | R1 |

Listing Details

Listing Office

Royal LePage Valley Realty

Data is supplied by Pillar 9â„¸ MLSÂ® System. Pillar 9â„¸ is the owner of the copyright in its MLSÂ® System. Data is deemed reliable but is not guaranteed accurate by Pillar 9â„¸. The trademarks MLSÂ®, Multiple Listing ServiceÂ® and the associated logos are owned by The Canadian Real Estate Association (CREA) and identify the quality of services provided by real estate professionals who are members of CREA. Used under license.