

\$99,900 - 590 7 Avenue W, Beaverlodge

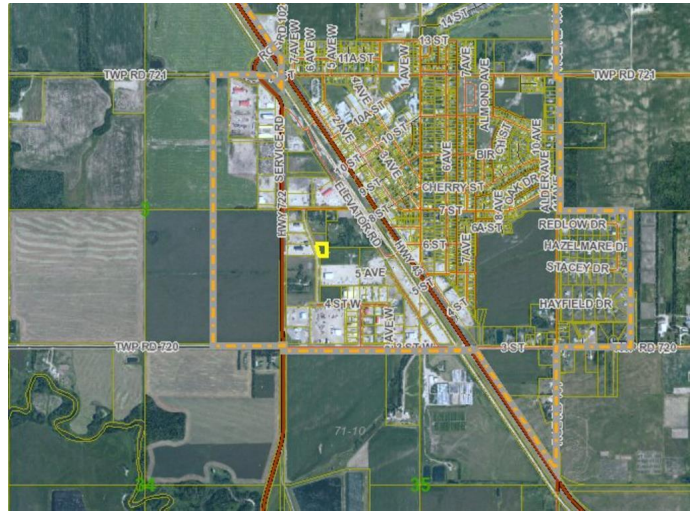
MLS® #A2006156

\$99,900

0 Bedroom, 0.00 Bathroom,
Land on 0.96 Acres

NONE, Beaverlodge, Alberta

This .96 acre lot located in the Beaverlodge West Industrial Park would provide a great opportunity for your existing business or to build some much needed shop space for rent. Sellers would consider building to suit and either selling or leasing with building. Sellers would also consider residential or rural properties on trade. Bring your proposals. The hookup fee for Municipal services have been amortized by the Town of Beaverlodge and payments are made annually with taxes.



Essential Information

MLS® #	A2006156
Price	\$99,900
Bathrooms	0.00
Acres	0.96
Type	Land
Sub-Type	Industrial Land
Status	Active

Community Information

Address	590 7 Avenue W
Subdivision	NONE
City	Beaverlodge
County	Grande Prairie No. 1, County of
Province	Alberta
Postal Code	T0H 0C0

Additional Information

Date Listed October 13th, 2022

Days on Market 908

Zoning I

Listing Details

Listing Office RE/MAX Grande Prairie

Data is supplied by Pillar 9â,,ç MLSÂ® System. Pillar 9â,,ç is the owner of the copyright in its MLSÂ® System. Data is deemed reliable but is not guaranteed accurate by Pillar 9â,,ç. The trademarks MLSÂ®, Multiple Listing ServiceÂ® and the associated logos are owned by The Canadian Real Estate Association (CREA) and identify the quality of services provided by real estate professionals who are members of CREA. Used under license.