

\$339,900 - 2 Baywood Place, Sylvan Lake

MLS® #A2211553

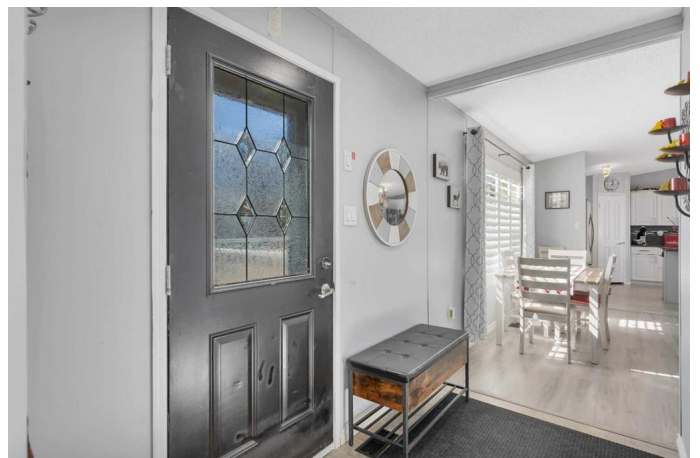
\$339,900

3 Bedroom, 2.00 Bathroom, 1,418 sqft
Residential on 0.11 Acres

Lighthouse Point, Sylvan Lake, Alberta

Welcome to this beautifully maintained home located in a prime spot in the heart of Sylvan Lake—close to everything you need, yet tucked away enough to offer peace and quiet. Situated on its own lot, this charming property offers a triple-car driveway, a sun-filled sunroom, and a meticulously landscaped and fenced backyard, a storage shed, and thoughtful touches throughout. Step inside to discover a home that's been lovingly updated and kept in immaculate condition. Enjoy vinyl plank flooring in the living room, fresh paint, and elegant shutter-style window coverings that enhance both style and privacy. The open-concept kitchen is a true centerpiece, offering natural sunlight, a large island with seating, and a layout perfect for entertaining. The primary suite is your private retreat, boasting a spacious walk-in closet, a 4-piece ensuite with a jacuzzi tub, and plenty of room to unwind. Off the laundry room, you'll find the sunroom, perfect for relaxing with a book, or your morning coffee. At the opposite end of the home, two additional generously sized bedrooms and another 4-piece bathroom provide plenty of room for family or guests. Whether you're downsizing, investing, or looking for your first home, this property offers low-maintenance living with no compromises on comfort or quality. Just move in and enjoy the lifestyle you deserve in beautiful Sylvan Lake!

Built in 2012



Essential Information

| | |
|----------------|-------------------------|
| MLS® # | A2211553 |
| Price | \$339,900 |
| Bedrooms | 3 |
| Bathrooms | 2.00 |
| Full Baths | 2 |
| Square Footage | 1,418 |
| Acres | 0.11 |
| Year Built | 2012 |
| Type | Residential |
| Sub-Type | Detached |
| Style | Single Wide Mobile Home |
| Status | Active |

Community Information

| | |
|-------------|------------------|
| Address | 2 Baywood Place |
| Subdivision | Lighthouse Point |
| City | Sylvan Lake |
| County | Red Deer County |
| Province | Alberta |
| Postal Code | T4S 0A7 |

Amenities

| | |
|----------------|-----------------------------------|
| Amenities | None |
| Parking Spaces | 3 |
| Parking | Driveway, Off Street, Parking Pad |

Interior

| | |
|-------------------|--|
| Interior Features | Ceiling Fan(s), Open Floorplan, Pantry, See Remarks, Vaulted Ceiling(s), Walk-In Closet(s) |
| Appliances | See Remarks |
| Heating | Forced Air, Natural Gas |
| Cooling | None |
| # of Stories | 1 |
| Basement | None |

Exterior

| | |
|-------------------|--|
| Exterior Features | Fire Pit |
| Lot Description | Back Yard, Corner Lot, Landscaped, Standard Shaped Lot |

| | |
|--------------|-----------------|
| Roof | Asphalt Shingle |
| Construction | Vinyl Siding |
| Foundation | Piling(s) |

Additional Information

| | |
|----------------|------------------|
| Date Listed | April 15th, 2025 |
| Days on Market | 5 |
| Zoning | R4 |

Listing Details

| | |
|----------------|------------------------|
| Listing Office | Greater Property Group |
|----------------|------------------------|

Data is supplied by Pillar 9â„¢ MLSÂ® System. Pillar 9â„¢ is the owner of the copyright in its MLSÂ® System. Data is deemed reliable but is not guaranteed accurate by Pillar 9â„¢. The trademarks MLSÂ®, Multiple Listing ServiceÂ® and the associated logos are owned by The Canadian Real Estate Association (CREA) and identify the quality of services provided by real estate professionals who are members of CREA. Used under license.