

# \$389,000 - 113 14 Street N, Lethbridge

MLS® #A2212266

**\$389,000**

4 Bedroom, 2.00 Bathroom, 1,122 sqft

Residential on 0.15 Acres

Westminster, Lethbridge, Alberta

This 4-bedroom, 2-bathroom home offers 1,122 sq. ft. of comfortable living space, with a beautifully renovated basement and plenty of room for the whole family. It features updated appliances, off-street parking for up to 5 vehicles, and great curb appeal. Located just a short walk from Centre Village Mall, schools, and recreation facilities, this home is perfectly situated for convenience. Book your private showing today with your REALTOR®!

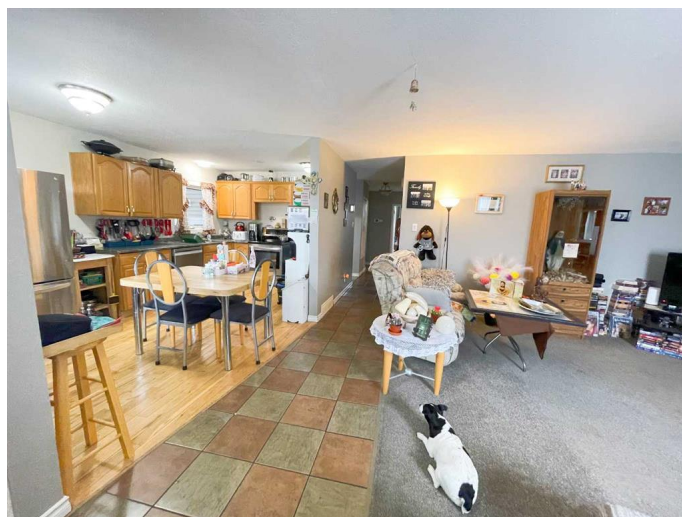
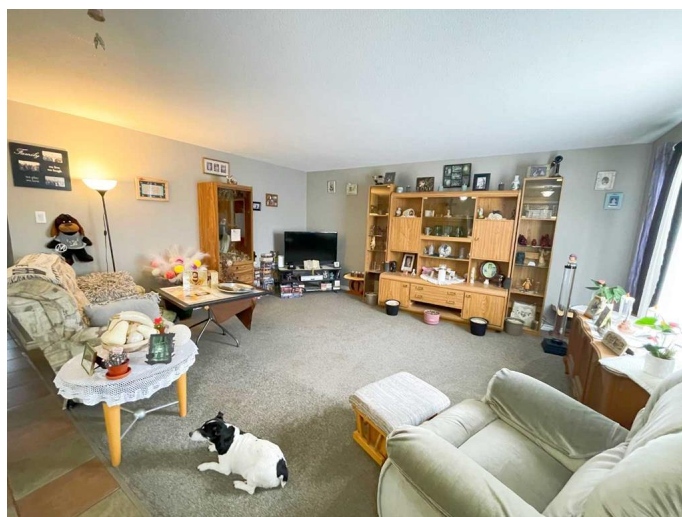
Built in 1968

## Essential Information

MLS® #	A2212266
Price	\$389,000
Bedrooms	4
Bathrooms	2.00
Full Baths	2
Square Footage	1,122
Acres	0.15
Year Built	1968
Type	Residential
Sub-Type	Detached
Style	Bungalow
Status	Active

## Community Information

Address	113 14 Street N
Subdivision	Westminster



City	Lethbridge
County	Lethbridge
Province	Alberta
Postal Code	T1H2V6

### Amenities

Parking Spaces	5
Parking	Single Garage Attached
# of Garages	299

### Interior

Interior Features	See Remarks
Appliances	Central Air Conditioner, Dishwasher, Refrigerator, Stove(s), Washer/Dryer
Heating	Forced Air
Cooling	Central Air
Has Basement	Yes
Basement	Exterior Entry, Finished, Full

### Exterior

Exterior Features	Private Yard
Lot Description	Rectangular Lot
Roof	Flat Torch Membrane
Construction	Stone, Vinyl Siding, Wood Frame
Foundation	Poured Concrete

### Additional Information

Date Listed	April 18th, 2025
Days on Market	2
Zoning	R-L(W)

### Listing Details

Listing Office	Maxwell Devonshire Realty
----------------	---------------------------

Data is supplied by Pillar 9â„¢ MLS® System. Pillar 9â„¢ is the owner of the copyright in its MLS® System. Data is deemed reliable but is not guaranteed accurate by Pillar 9â„¢. The trademarks MLS®, Multiple Listing Service® and the associated logos are owned by The Canadian Real Estate Association (CREA) and identify the quality of services provided by real estate professionals who are members of CREA. Used under license.