

\$257,000 - 108 Moberly Road, Grande Cache

MLS® #A2212853

\$257,000

4 Bedroom, 4.00 Bathroom, 1,502 sqft
Residential on 0.28 Acres

NONE, Grande Cache, Alberta

Perfect starter home which allows you to grow your family, plus have the ability to supplement your mortgage payments. This home has 3 good sized bedrooms and 2.5 bathrooms on the first 2 floors. The basement suite, with its own comes with 1 bedroom, 1 bathroom, full kitchen and living space.

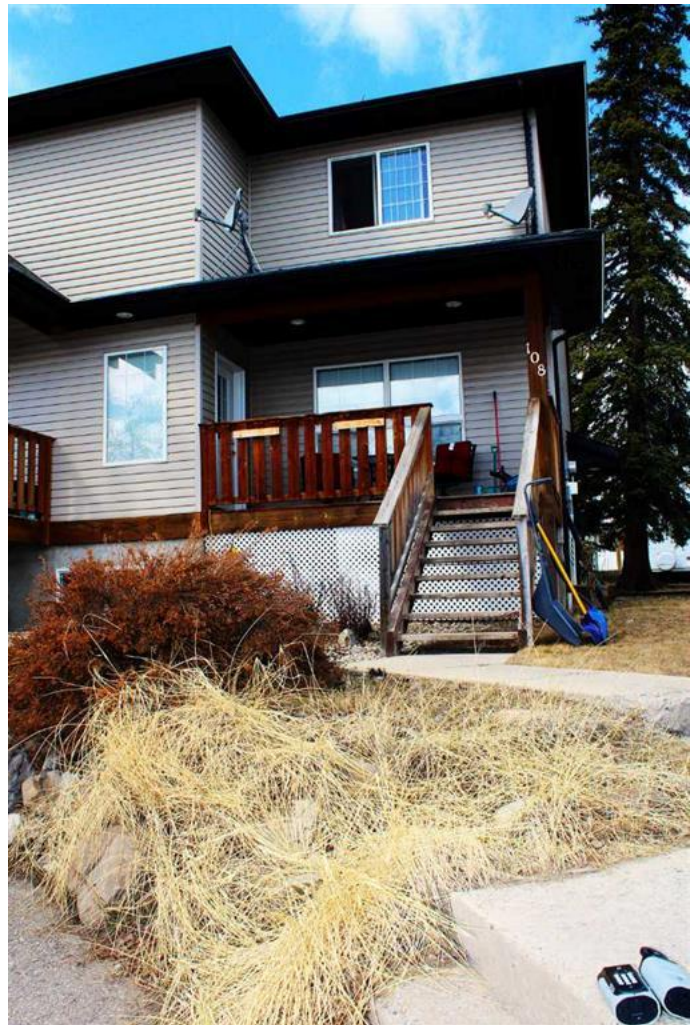
Built in 2005

Essential Information

MLS® #	A2212853
Price	\$257,000
Bedrooms	4
Bathrooms	4.00
Full Baths	3
Half Baths	1
Square Footage	1,502
Acres	0.28
Year Built	2005
Type	Residential
Sub-Type	Semi Detached
Style	2 Storey, Side by Side
Status	Active

Community Information

Address	108 Moberly Road
Subdivision	NONE
City	Grande Cache
County	Greenview No. 16, M.D. of



Province Alberta
Postal Code T0E 0Y0

Amenities

Parking Spaces 3
Parking Off Street

Interior

Interior Features Kitchen Island
Appliances Dishwasher, Dryer, Elect
Washer/Dryer Stacked
Heating Forced Air
Cooling None
Fireplace Yes
of Fireplaces 1
Fireplaces Gas
Has Basement Yes
Basement Exterior Entry, Finished, Full,

Exterior

Exterior Features None
Lot Description Back Yard
Roof Asphalt Shingle
Construction Vinyl Siding
Foundation Poured Concrete

Additional Information

Date Listed April 16th, 2025
Days on Market 5
Zoning RE

Listing Details

Listing Office 2% Realty Edge AB

Data is supplied by Pillar 9â,,ç MLSÂ® System. Pillar 9â,,ç is the owner of the copyright in its MLSÂ® System. Data is deemed reliable but is not guaranteed accurate by Pillar 9â,,ç. The trademarks MLSÂ®, Multiple Listing ServiceÂ® and the associated logos are owned by The Canadian Real Estate Association (CREA) and identify the quality of services provided by real estate professionals who are members of CREA. Used under license.

